



**Model E 25 - 40**  
**Serial No. 25419**  
**Manufactured 1935**

**Acquired by: Friedrich Implement Company, Inc.**

**Acquisition date: Prior to 1993**

**Original owner: (Not known) Preserved by: Elmer Friedrich**

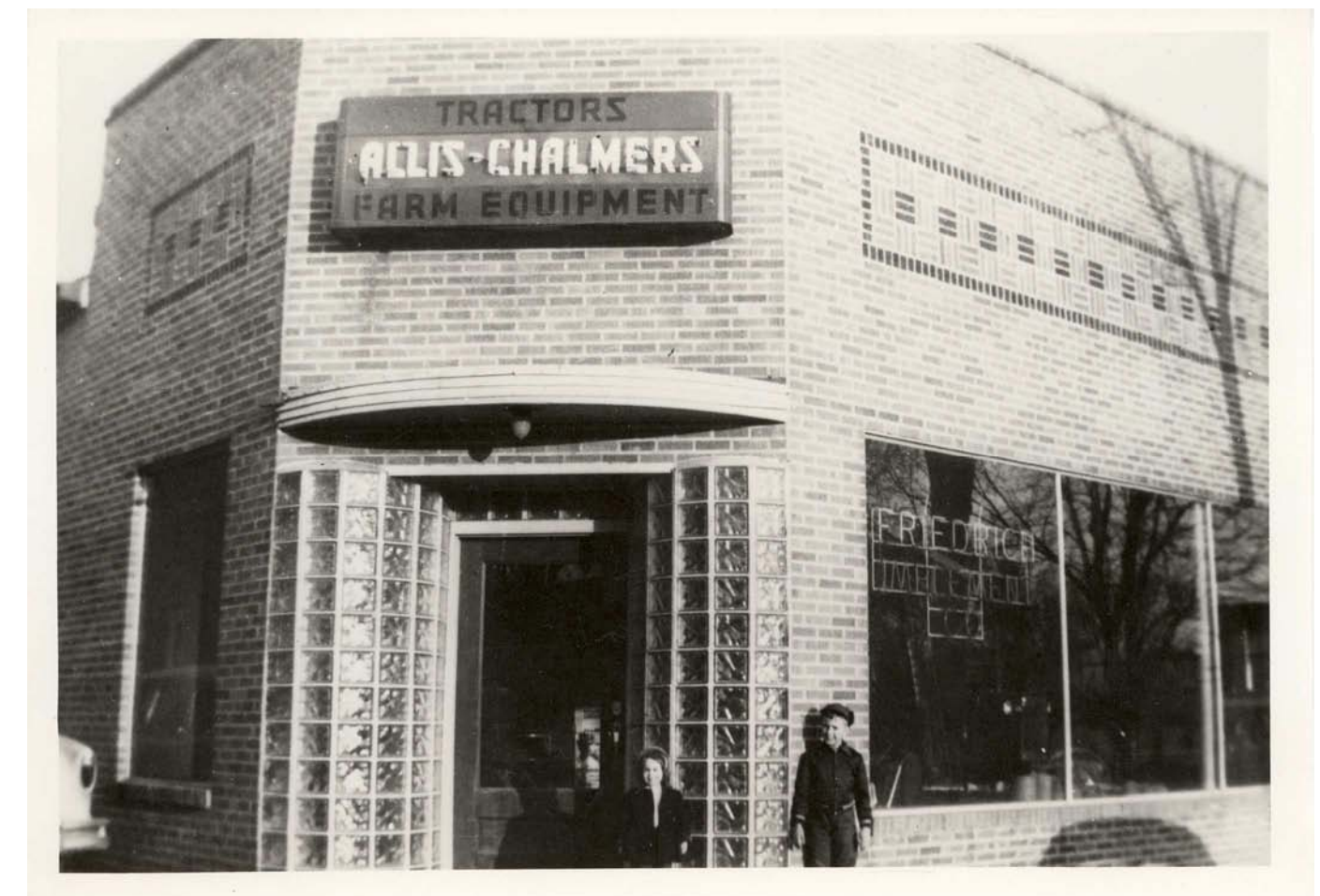


Model E, S/N 25419 before restoration, August 2006



**Friedrich Implement Company, Inc. Circa 1950**

**Left to right: Employees: Roy Bechtold, Bob Friedrich, James W. Morton;  
 Elmer Friedrich (Company Vice President),  
 Edna Mae Friedrich (Company Secretary-Treasurer)**



**If you would like to share historical information  
 which you know about this tractor, please call:**

**Gary Friedrich  
 618-334-7909**

\* “The Model E in all its permutations was the tractor that put Allis-Chalmers firmly in the tractor business. The ultimate development in the Model E, which over the years included many different developments, was the 25-40 Thresherman’s Special. Fitted with a special engine so powerful that the company refused to warrant the tractor for plowing purposes, the Thresherman’s Special was the production *hot rod* of Allis tractors.”

\* Text credit to: *Original Allis-Chalmers 1933-1957*, Authors: Guy Fay and Andy Kraushaar  
<http://images.marketworks.com/fullView.asp?id=53736465&fc=1&img=http://images.marketworks.com/hi/33/33493/allis-chalmers>